

SOUTH SOUND SAILING SOCIETY
2017-2020 PHRF SAILING INSTRUCTIONS

1. RULES

- 1.1. The races will be governed by the 2017-20 Racing Rules of Sailing (hereinafter referred to as RRS), including the USSA Prescriptions, class rules, Notice of Race (NOR), and these sailing instructions.
- 1.2. The sailing instructions for each race or series are attached as an appendix to these sailing instructions: Appendix A, Buoy Racing; Appendix B, Distance Races; Appendix C, Individual Races not in a Series.

2. NOTICES TO COMPETITORS – Notices to competitors will be posted on the South Sound Sailing Society (SSSS) website notice board at <http://www.ssssclub.com/>

3. CHANGES TO SAILING INSTRUCTIONS – Changes to the sailing instructions will be posted on the SSSS website notice board one week prior to them taking effect.

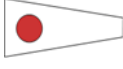

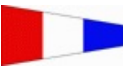

4. SIGNALS MADE ASHORE – The Race Committee will not make signals ashore. If the race is canceled prior to the Race Committee leaving the dock, competitors will be notified by email from the Race Chair or their designate, and posted per Sailing Instruction 2.

5. SCHEDULE OF RACES

- 5.1. The schedule of races for the season is published on the SSSS website.
- 5.2. The scheduled time of the first warning signal for each race is found in the individual race or series sailing instructions, which are attached as an appendix to these sailing instructions.

6. CLASS FLAGS

The following are the class flags that will be displayed as class flags by the signal boat during the starting sequence (see the NOR for the flag a boat is requested to fly while racing):

Class S - Numeral Pennant No. 1	
Class A - Numeral Pennant No. 2	
Class B - Numeral Pennant No. 3	
All D Classes - Numeral Pennant No. 4	

See the NOR for class descriptions

7. RACING AREA

- 7.1. The racing area for Buoy Racing is Budd Inlet north of Government Mark No. 5.
- 7.2. Distance races will be as given in the Sailing Instructions for the series provided in the Appendix.

8. COURSES

- 8.1. Distance race courses are described in Appendix B for each race.
- 8.2. Buoy race courses are signaled from the Signal Boat at, or before the warning signal. See Appendix A, Buoy Racing, for the course signals.
- 8.3. The races may be shortened at any mark of the course, as defined in the individual race Sailing Instructions. The race will be shortened in accordance with rule 32.2.

SOUTH SOUND SAILING SOCIETY
2017-2020 PHRF SAILING INSTRUCTIONS

8.4. If the race is shortened for some, but not all classes, the class flags for the classes for which the race is shorted will also be displayed.

9. MARKS

9.1. Distance race marks are land marks such as islands and points of land, government navigational marks, mark boats, or temporary orange and yellow inflatable marks as described in the individual race Sailing Instructions.

9.2. The marks for Buoy Racing will be white cylindrical South Sound Sailing Society marks approximately 2 feet tall, or inflatable orange and yellow drop marks.

10. THE START

10.1. The races will be started using rule 26 with a warning signal 5 minutes before the start.

10.2. For the first class to start, one minute prior to the warning signal, an attention signal will be made using multiple sound signals.

10.3. The starting line will be between the orange flag on the signal boat and the course side of starting mark.

10.4. General and Individual Recalls will be signaled in accordance with rule 29, Recalls.

10.5. After the Preparatory Signal has been given for a start, all boats whose warning signal has not been given, shall stay clear of the Starting Area. The Starting Area lies within 200 feet of either side of the starting line and 200 feet of its ends.

11. THE FINISH

11.1. The finish line is between the orange flag on the signal boat and the course side of the finish mark.

11.2. If the race committee is absent when a boat finishes, she should report her finishing time, and her position in relation to nearby boats, to the race committee at the first reasonable opportunity.

12. PENALTIES

12.1. The one and two-turns penalties, in accordance with rule 44.2, will apply for all races.

12.2. When the term, "serious damage", is used in the rules it is defined as \$1000 total repair cost for the damaged boat(s) involved in the incident.

13. PROPULSION

13.1. In accordance with rule 42, Propulsion, a boat shall not use her engine to gain ground in the direction of the race, hold position in adverse current or otherwise gain advantage over its competition while racing, with the following exceptions, this amends rule 42.3, Exceptions.

13.2. A boat that has not started may use her engine for propulsion after her Preparatory Signal to position herself to start. She shall not start until five minutes after shutting off her engine. This use is not allowed inside the starting area, as defined in Sailing Instruction 10.5, and must stop upon reaching the edge of the starting area. The one exception is that a boat inside the starting area can power out of it, but only by the most direct route to the nearest edge and if taking care not to interfere with any boat that is racing. She is then treated like other boats subject to this rule.

SOUTH SOUND SAILING SOCIETY
2017-2020 PHRF SAILING INSTRUCTIONS

- 13.3. An engine may always be used to aid another vessel or its crew, racing or not. A record of the time devoted to such aid and the circumstances requiring it shall be kept and submitted in writing, within the protest time limit, to the Protest Chair to be considered for redress. The time spent giving aid may be deducted from a yacht's elapsed time.
- 13.4. An engine may be used to rescue one's own crew. Such use shall be reported to the Protest Chair, in writing, within the protest time limit. Time lost in making a rescue will be the yacht's penalty for use of engine propulsion.
- 13.5. A boat becalmed and in danger of being run down by a vessel under power may use her engine to gain a safe position. A record of where she was when starting the engine, how long it ran, and where she was when she turned it off shall be kept. This, along with a written report, shall be submitted to the Protest Chair within the protest time limit.
- 13.6. An engine may be used to charge batteries or operate ship's domestic systems at any time without penalty, if it is disconnected from any means of propulsion. It shall be the skipper's responsibility to ensure that the propeller is not turning.

14. TIME LIMITS

- 14.1. Time limits are given in the individual race Sailing Instructions. If no boat in a class has sailed the course in accordance with rule 28, Sailing the Course, and finished within the specified time limit, the race will be abandoned for that class.
- 14.2. Unless the individual race Sailing Instruction state otherwise, if at least one boat in a class has sailed the course and finished within the time limit, the time limit for the other boats in the class will be her finish time plus 30 minutes, or the given time limit for the race, whichever is greater. All boats in that class that have started, but not finished when the time limit expires, are scored Did Not Finish. This changes rule 35, Time Limit and Scores.

15. PROTESTS AND REQUESTS FOR REDRESS

- 15.1. Protests, and requests for redress shall be made in accordance with RRS Part 5 Section A, except that all boats regardless of length, must fly a protest flag. This amends rule 61.1, Informing the Protestee.
- 15.2. The Race Committee shall be notified of the intent to protest, and the boat being protested immediately upon finishing or, if unable to finish, as soon as possible after reaching port.
- 15.3. All protests and requests for redress shall be in writing, hand delivered to the Protest Chair, or by email to protests@ssssclub.com, 72 hours after the start of the race in which the protested incident occurred.
- 15.4. Protests and requests for redress will be heard as soon as possible in a place designated by the Protest Chair. The Protest Chair will give ample notice to all parties if a change of location is necessary.
- 15.5. Concession, by withdrawing from the race in question, or withdrawal of a protest, may be made at any time prior to the hearing. This amends rule 63.1, Requirement for a Hearing. The Protest Chair must be notified promptly of such intent to allow notification of all parties.
- 15.6. The protest committee will, if notified from any source, protest a boat for sailing across a towline or impeding commercial traffic by sailing too close. This amends rule 60.3. If a boat is disqualified she will be scored DNE, and the score will not be excluded from any series.

SOUTH SOUND SAILING SOCIETY
2017-2020 PHRF SAILING INSTRUCTIONS

- 15.7. In the event there is a collision resulting in personal injury or serious damage, as defined in Sailing Instruction 12, the protest committee will protest the boats involved in the incident, if no protest has been filed, or one of the boats has not taken responsibility, and notified the Protest Chair in writing. If a boat is disqualified by a protest committee initiated protest, she will be scored DNE, and the score will not be excluded from any series.
- 15.8. A boat causing damage to the race committee boat, will be scored DNE without a hearing. This amends RRS Rule 63.1, Requirement for a Hearing. If she believes she was caused to do so by another boat, she must protest that boat, file a written protest within the time limit, and the other boat found responsible by the protest committee after a hearing; or the other boat may notify the Protest Chair in writing that she was responsible for the damage prior to the hearing. The boat responsible for damage will be held liable for such damage, and scored DNE.

16. SCORING

- 16.1. The low point scoring system of RRS Appendix A will be used, except as modified herein. Race results will be determined based on a boat's corrected time using the PHRF time on distance handicap system. See the NOR for determining classes and handicaps.
- 16.2. The number of races scheduled for a series is as shown in the Sailing Instructions for that series. One race is needed to constitute a series. When the series sailing instructions indicate a throw out, it will apply only if all the all the scheduled number of races are sailed.
- 16.3. The following scoring penalties will apply, and modifies rule A4.2:

DNC	Number of finishers plus 2
DNS	Number of finishers plus 1
OCS	Number of finishers plus 1
DNF	Number of finishers plus 1
RET	Number of finishers plus 1
DSQ	Number of finishers plus 3
DNE	Number of finishers plus 3, not excludable

See rule A11, Scoring Abbreviations, for the descriptions.

- 16.4. For series scoring first place will be given 0.75 points. This modifies rule A4, Low Point System.
- 16.5. Race ties are scored as provided in rule A7, Race Ties
- 16.6. Series ties will be broken using the following criteria in succession, which replaces rule A8, Series Ties:
- 16.6.1. Total score including excluded races.
- 16.6.2. If still tied the boat finishing ahead of the others in the most races.
- 16.6.3. If still tied they will be declared tied, and will be placed in the highest position in question in a series. No boat will be placed above her actual place as a result of a tie between boats above her.
- 16.7. A boat serving as race committee, if participating in at least two additional races in that series, will be scored the lower of: the average of her finishes for that series, or DNF for the race she was race committee. If she does not race at least two additional races in that series, she will be scored as DNC for the race she was Committee Boat.

SOUTH SOUND SAILING SOCIETY
2017-2020 PHRF SAILING INSTRUCTIONS

17. SAFETY

- 17.1. Check-In Procedure: A boat shall check in with the race committee prior to the race by announcing her boat name, and/or sail number either by hail or radio call on channel 72.
- 17.2. A boat that retires from a race shall notify the race committee as soon as possible. A boat that does not report their withdrawal will be scored DNC.

18. EQUIPMENT

- 18.1. Boats must comply with USCG equipment requirements for vessels of their class. In addition, see the specific series sailing instructions for when compliance with US Sailing Nearshore safety equipment requirements, as amended by the South Sound Sailing Society, is required.
- 18.2. Single or double-handed crews must wear a Coast Guard approved PFD when racing.
- 18.3. A boats equipment may be inspected at any time for compliance with the equipment requirements.
- 18.4. Failure to comply with these requirements will be cause for disqualification by protest by either the Race Committee or a participating boat.

19. COMMUNICATIONS

- 19.1. The race committee will monitor channel 72 during the race. In addition, there will be a cell phone on board, phone number (360) 890-8450. In fairness to all competitors, the race committee is not required to answer any call from contestants except in emergency, or acknowledging check-ins and withdrawals.
- 19.2. Except in an emergency, checking in, or notice of withdrawals, a boat shall neither make radio transmissions while racing nor receive radio communications not available to all boats. This restriction also applies to mobile telephones.

20. DISCLAIMER OF LIABILITY

Sailing is an activity that has an inherent risk of damage and injury. Competitors in this event are participating entirely at their own risk. See RRS 4, Decision to Race.

The race organizers (organizing authority, race committee, protest committee, host club, sponsors, or any other organization or official) will not be responsible for damage to any boat or other property or injury to any competitor, including death, sustained as a result of participation in these events. By participating, each competitor agrees to release the race organizers from any and all liability associated with such competitor's participation to the fullest extent permitted by law.

APPENDIX A

BUOY RACES

This appendix provides the instructions for the buoy races that take place during the SSSS sailing calendar.

Fall and Spring Series:

The Fall and Spring Series are buoy races that take place in Budd Inlet. The Fall Series is in September and starts the South Sound Sailing Society season. Each series has 4 races scheduled. Each series will have one throw out if all scheduled races are sailed.

The Spring Series takes place in April, and ends the winter sailing season. See the South Sound Sailing Society calendar for the race days.

Courses:

As displayed by the flags on Race Committee boat: See the Buoy Race Courses and mark chart.

At the discretion of the race committee, if code flag T (Tango) is displayed, the race is from the start-finish line set by the race committee to the Itsami ledge government mark (leave to port) and back to the start-finish line.

Start Times:

Attention: Ready for start sequence: multiple short sounds	1154
First Warning Signal: class flags for A & S	1155
Preparatory Signal: P flag	1156
P flag down	1159
First Start: S & A, Warning B&D	1200
class flags A & S down, class flags B & D up	
Preparatory Signal: P flag	1201
P flag comes down	1204
Second Start: B & D class flags down	1205

Finish time limit:

6 hours after each class start.

Wednesday Evening Races:

These short mid-week, evening buoy races include the Vice Commodore's Series, Commodore's Series, and the Secretary's Series. Each series has 4 races scheduled. Each series will have one throw out if all scheduled races are sailed.

Vice Commodores Series is in June, the Commodore's Series is in July, and the Secretary's Series is in August. See the SSSS calendar for the dates of each series.

Courses:

As displayed from the Committee Boat: See the Buoy Race Courses and mark chart.

Start Times:

Attention: multiple short sounds	1824
First Warning Signal: class flags A & S	1825
Preparatory Signal: P flag	1826
P flag down	1829
First Start: S & A, class flags down/	1830
Second Warning Signal: starting class flags B & D up	
Preparatory Signal: P flag	1831
P flag comes down	1834
Second Start: B & D class flags down	1835

Finish Time Limit:

2.5 hours after each class start.

Buoy Race Courses

Start and finish between the RC boat and a temporary mark, or a SSSS race mark, set by the RC boat. All races are four laps unless shortened. The races may be shorted after a lap at the start-finish line, or at a mark.

If one flag is flown by the RC:

The windward mark is indicated by the Course Flag. Start, then round the windward mark to port. Next round either end of the start/finish line, leaving signal boat to port, or pin end to starboard to complete each lap.

If two flags are flown by the RC:

The windward and leeward marks are indicated by the Course Flags. The windward mark corresponds to the first Course Flag; the leeward mark corresponds to the second Course Flag. Start, round the windward mark, the leeward mark, then cross the start/finish line to complete each lap. All marks left to port. The start/finish line is closed unless starting or finishing a lap. Boats sailing through the line when not starting or finishing a lap will be scored DNF without a protest hearing. This amends RRS Rule 63, Hearings.

For Secretary's Series Only

If three flags are flown one of two courses can be signaled:

Course: BYR (Black, Yellow, Red flags): All marks left to port.

Course: BGR (Black, Green, Red flags): All marks left to starboard.

Start, round in order the windward mark, signaled by the first flag, the wing mark, signaled by the second flag, the leeward mark, signaled by the third flag, then cross the start/finish line to complete each lap.

Changing the Course after the Start

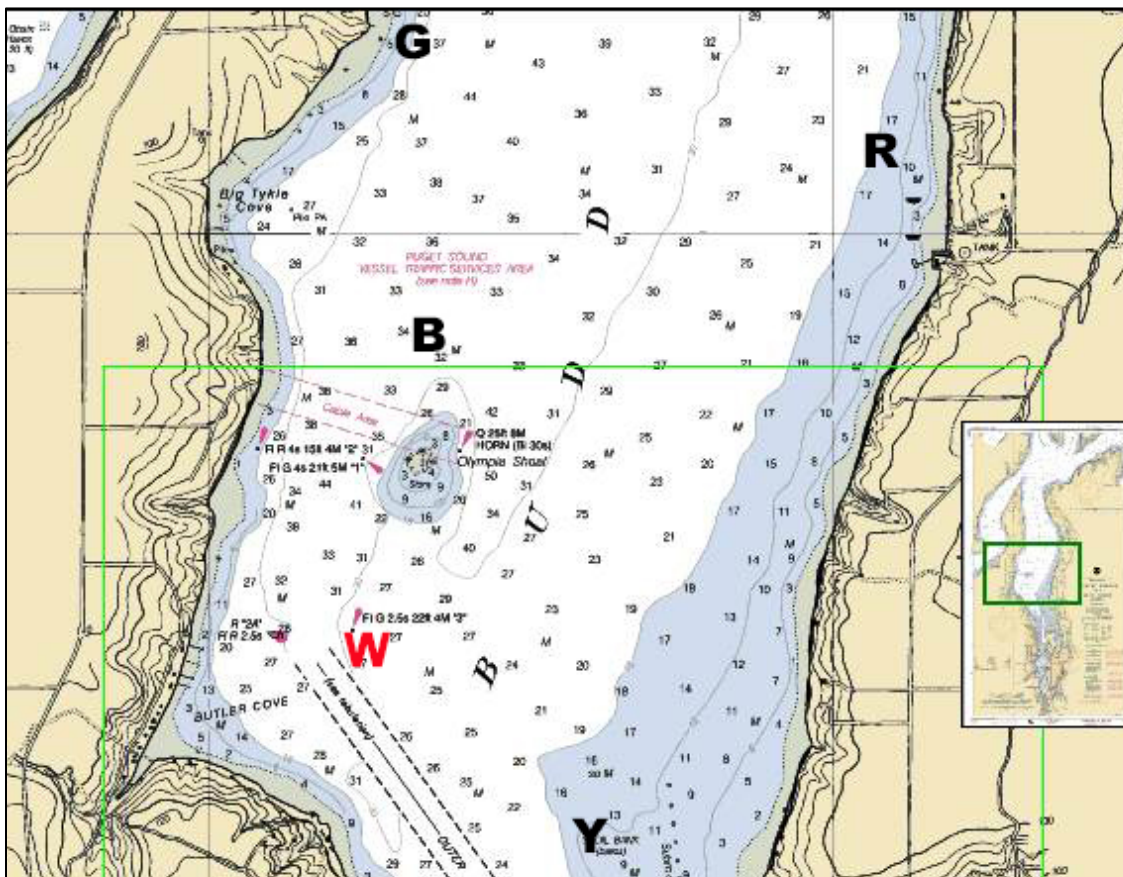
The course may be changed after the start by displaying Code Flag C and making repetitive sound signals. The colored flags for the new course will be displayed by the Race Committee.



Read Course flags top to bottom if displayed vertically, or front to back if displayed horizontally.

Marks:

The marks are white SSSS cylindrical marks located as shown on the chart. **Mark W is a U.S. Gov't Dolphin.** Drop marks are inflatable orange or yellow marks set by the RC, and will be located to windward or leeward of the start-finish line.

MARK LOCATIONS



Flag		Position
Green		47:06.609N 122:55.305W
Black		47:05.639N 122:55.206W
Red		47:06.133N 122:53.925W
Yellow		47:04.677N 122:54.825W
White		47:05.357 122:55.548W
Code Flag Delta		Drop mark set by the Race Committee
Code Flag Tango Itsami Ledge		47:10.385N 122:50.217W

The coordinates given are approximate and provide the general location of the mark. If the position of the mark varies from that given, it is not grounds for redress.

APPENDIX B

DISTANCE RACES

This appendix describes the distance races that take place during the winter season of racing. There are two series of distance races that race around islands called the Island Series, and into inlets named the Inlet Series. The dates for the individual races are given in the SSSS calendar.

Equipment Requirements:

When competing in the distance races all boats shall be in compliance with the [US Sailing Nearshore Safety Equipment Requirements \(version 4/23/14\) as amended by the South Sound Sailing Society](#).

Series:

There are four races in each series as described in the following instructions. Each series will have one throw out if all scheduled races are sailed.

South Sound Islands Series

Race	Month
Eagle Island Race	October
Herron Island Race	November
Squaxin Island Race	November
Hope Island Race	December

South Sound Inlet Series

Race	Month
Eld Inlet Race	January
Henderson Inlet Race	February
Skookum Inlet Race	March
McAllister Creek Race	March

Eagle Island

Distances:

Short Course	Long Course
20.3 n.m.	26.5 n.m.

Courses:

Start and finish between the Race Committee Boat and Olympia Shoal.

Long Course: To be sailed by all PHRF classes. Leave the stake boat at the NW corner of Anderson Island to port. The course can be shortened between the stake boat and Anderson Island on a line represented by a compass bearing of 180° or at Itsami Ledge on either the outbound or inbound course.

Short Course: To be sailed by D classes. Leave the temporary SSSS mark south of Devils Head to starboard. This course can be shortened at the Devils Head mark, or at Itsami Ledge on either the outbound or inbound course

Start Times:

Alert: Ready for start sequence: multiple short sounds	0929
Warning Signal: class flag for D Classes	0930
Preparatory Signal: P flag up	0931
P flag comes down	0934
Start: D Classes flag down	0935

Alert: Ready for start sequence: multiple short sounds	0954
Warning Signal: class flag B	0955
Preparatory Signal: P flag up	0956
P flag comes down	0959
First Start: B, Warning S & A; Class B down, Class S & A up	1000
Preparatory Signal: P flag up	1001
P flag comes down	1004
Second Start: S and A flags down	1005

Time Limit:

12 hours after each class start.

Herron Island

Distances:

Long Course	Short Course
24.5 nm	20.8 nm

Courses:

Start and finish between the Race Committee Boat and Olympia Shoal.

Long Course: To be sailed by all PHRF classes. Leave Herron Island to port. The course may be shortened between the short course stake boat and Herron Island, compass bearing of the line approximately 270 from the boat.

Short Course: To be sailed by all D classes. Leave the stake boat, southeast of Herron Island to starboard. The course may be shortened between the short course stake boat and Herron Island, compass bearing of the line approximately 270° from the boat.

Start Times:

Alert: Ready for start sequence: multiple short sounds	0929
Warning Signal: class flag for D Classes	0930
Preparatory Signal: P flag up	0931
P flag comes down	0934
Start: D Classes flag down	0935

Alert: Ready for start sequence: multiple short sounds	0954
Warning Signal: class flag B	0955
Preparatory Signal: P flag up	0956
P flag comes down	0959
First Start: B, Warning S & A; Class B down, Class S & A up	1000
Preparatory Signal: P flag up	1001
P flag comes down	1004
Second Start: S and A flags down	1005

Time Limit:

12 hours after each class start.

Squaxin Island:

Distance:

20.0 n.m.

Course:

Start and finish between the Race Committee Boat and Mark 5.
Leave Squaxin Island to port. The course may be shortened between the RC boat and Squaxin Island, the line at compass bearing of approximately 220° from the boat, and south of the passage at the NE side of Squaxin Island.

Start Times:

Alert: Ready for start sequence: multiple short sounds	0929
Warning Signal: class flag for D Classes	0930
Preparatory Signal: P flag up	0931
P flag comes down	0934
Start: D Classes flag down	0935

Alert: Ready for start sequence: multiple short sounds	0954
Warning Signal: Class flag B	0955
Preparatory Signal: P flag up	0956
P flag comes down	0959
First Start: B, Warning S & A; Class B down, Class S & A up	1000
Preparatory Signal: P flag up	1001
P flag comes down	1004
Second Start: S and A flags down	1005

Time Limit:

12 hours after each class start.

Hope Island:

Distance:

13.0 n.m.

Course:

Start and finish between the Race Committee Boat and Olympia Shoal
Round Hope Island in either direction.

Start Times:

Alert: Ready for start sequence: multiple short sounds	0929
Warning Signal: class flag for D Classes	0930
Preparatory Signal: P flag up	0931
P flag comes down	0934
Start: D Classes flag down	0935

Alert: Ready for start sequence: multiple short sounds	0954
Warning Signal: Class flag B	0955
Preparatory Signal: P flag up	0956
P flag comes down	0959
First Start: B, Warning S & A; Class B down, Class S & A up	1000
Preparatory Signal: P flag up	1001
P flag comes down	1004
Second Start: S and A flags down	1005

Time Limit:

10 hours after each class start.

Eld Inlet:

Distance:

11.1 n.m.

Course:

Start and finish between the Committee Boat and Olympia Shoal. Leave the stake boat or drop mark near Flapjack Point to port. The course may be shortened between the stake boat and Flapjack Point, the line on a compass bearing of approximately 270° from the boat, or between the committee boat and Cooper Point either on the way into or out of Eld Inlet.

Start Times:

Alert: Ready for start sequence: multiple short sounds	0929
Warning Signal: class flag for D Classes	0930
Preparatory Signal: P flag up	0931
P flag comes down	0934
Start: D Classes flag down	0935

Alert: Ready for start sequence: multiple short sounds	0954
Warning Signal: Class flag B	0955
Preparatory Signal: P flag up	0956
P flag comes down	0959
First Start: B, Warning S & A; Class B down, Class S & A up	1000
Preparatory Signal: P flag up	1001
P flag comes down	1004
Second Start: S and A flags down	1005

Time Limit:

9 hours after each class start.

Henderson Inlet:

Distances:

Short Course	Long Course
13.0 n.m.	16.5 n.m.

Courses:

Both courses start and finish between the Committee Boat and Olympia Shoal.

Long Course: To be sailed by all PHRF classes. Leave the mark boat, or drop mark in Henderson Inlet and Itsami Ledge, to port. The course may be shortened between the stake boat and a drop mark, or at Itsami ledge on the way back.

Short Course: To be sailed by D classes. Leave Itsami Ledge to port. The short course may be shortened at the Itsami Ledge.

Start Times:

Alert: Ready for start sequence: multiple short sounds	0929
Warning Signal: class flag for D Classes	0930
Preparatory Signal: P flag up	0931
P flag comes down	0934
Start: D Classes flag down	0935

Alert: Ready for start sequence: multiple short sounds	0954
Warning Signal: Class flag B	0955
Preparatory Signal: P flag up	0956
P flag comes down	0959
First Start: B, Warning S & A; Class B down, Class S & A up	1000
Preparatory Signal: P flag up	1001
P flag comes down	1004
Second Start: S and A flags down	1005

Time Limit:

9 hours after each class start.

Skookum Inlet:

Distances:

Short Course	Long Course
16.6 n.m.	23.4 n.m.

Courses:

Both courses start and finish between the Committee Boat and Olympia Shoal.

Long Course: To be sailed by all PHRF classes. Leave Hope Island and a stake boat or drop mark off Little Skookum Inlet to port. The long course can be shortened between the RC boat and the Steamboat Island Spit marker either on the way into or out of Skookum inlet, or at the drop mark.

Short Course: To be sailed by D classes. Leave Hope Island and a drop mark southwest off the Steamboat Island Spit marker to port. The course may be shortened between the RC boat and the drop mark, or between the RC boat and the Steamboat Island Spit marker.

Start Times:

Alert: Ready for start sequence: multiple short sounds	0929
Warning Signal: class flag for D Classes	0930
Preparatory Signal: P flag up	0931
P flag comes down	0934
Start: D Classes flag down	0935

Alert: Ready for start sequence: multiple short sounds	0954
Warning Signal: Class flag B	0955
Preparatory Signal: P flag up	0956
P flag comes down	0959
First Start: B, Warning S & A; Class B down, Class S & A up	1000
Preparatory Signal: P flag up	1001
P flag comes down	1004
Second Start: S and A flags down	1005

Time Limit:

9 hours after each class start.

McAllister Creek:

Distance:

Short Course	Long Course
17.0 n.m.	23.5 n.m.

Courses:

Both courses start and finish between the Committee Boat and Olympia Shoal.

Long Course: To be sailed by PHRF classes. Leave Government mark No. 3 off Nisqually Delta to port.

Short Course: To be sailed by D classes. Leave drop mark near Zittle's, north of Baird Cove to port.

Either race can be shortened at the Itsami Ledge mark either on the way out or back, to be signaled by the RC boat anchoring by the mark and flying code flag S. Then finish between the RC boat and the Itsami Ledge mark.

Start Times:

Alert: Ready for start sequence: multiple short sounds	0929
Warning Signal: class flag for D Classes	0930
Preparatory Signal: P flag up	0931
P flag comes down	0934
Start: D Classes flag down	0935

Alert: Ready for start sequence: multiple short sounds	0954
Warning Signal: Class flag B	0955
Preparatory Signal: P flag up	0956
P flag comes down	0959
First Start: B, Warning S & A; Class B down, Class S & A up	1000
Preparatory Signal: P flag up	1001
P flag comes down	1004
Second Start: S and A flags down	1005

Time Limit:

9 hours after each class start.

APPENDIX C

INDIVIDUAL RACES NOT IN A SERIES

This Appendix describes races that are individual races that are not included in a series. They are races that are open to all SSSS members and do not require a race fee to participate.

Maclean Memorial Race(s)

The format of this race is at the discretion of the Race Chair. Sailing Instructions will be posted on the SSSS website no later than 1 month prior to the scheduled race.

Jack & Jill and Single-handed Races

All SSSS Members are welcome to sail either or both. See the SSSS Calendar for the scheduled race days.

Eligibility:

Open to all SSSS Members. Payment of a race fee is not required.

Class Flags:

The class flag shall be the SSSS Burgee unless other classes are participating, in which case the RC will hail which class flags will be used for each start.

Special Requirements:

1 Jack & Jill Races:

The number of persons on board is limited to one female and one male.

2 Single-handed Races:

Only one person can sail the boat. A non-participating observer may accompany the sailor. The sailor and observer are not interchangeable at any time during the racing or pre-start sequence.

3 Both races:

3.1 there will be no handicap changes for these races. Handicaps will be as registered. If handicapped for them, flying sails may be used at the skipper's discretion and sole risk.

3.2 Automatic steering devices are not allowed; wheel brakes or tying the helm are permitted.

3.3 Life jackets are recommended.

APPENDIX C

INDIVIDUAL RACES NOT IN A SERIES

Starting times for first race:

Attention: Ready for start sequence	1454
Warning Signal : class flag raised	1455
Preparatory Signal : P flag raised	1456
P flag comes down	1459
First Start : class flag down	1500

All boats start together, or by class if participation warrants. **Starting time(s) of races after race 1 will be at the discretion of the Race Committee Boat.** Up to 3 races may be run. No race will start after 1830. All boats are to stand by after finishing, taking care not to interfere with boats still racing.

Courses:

As designated by the Race Committee Boat. See Appendix A, Buoy Races, for the course descriptions and signals.

Finish Time Limit:

2 hours after each class start

Classes:

1. There will be at least two classes: one for PHRF boats and one for D Class boats. Boats will be assigned to a class based on which class they last registered in.
2. The Race Committee may divide yachts into more classes based on handicaps and change the starting sequence by oral instruction from the Race Committee Boat.
3. Class Flags if more than one start: PHRF-numeral pennant #1, D Classes-numeral pennant #4, Stars-class flag. If other classes are started separately numeral pennants #2 & #3 will be used.

Scoring:

Scoring will be in accordance with SI 16, Scoring.