

APPENDIX A

BUOY RACES

This appendix provides the instructions for the buoy races that take place during the SSSS sailing calendar.

Fall and Spring Series:

The Fall and Spring Series are buoy races that take place in Budd Inlet and can extend to Itsami Ledge government mark. The Fall Series is in September and starts the South Sound Sailing Society season. Each series has 4 races scheduled. Each series will have one throw out if all scheduled races are sailed.

The Spring Series takes place in April, and ends the winter sailing season. See the South Sound Sailing Society calendar for the race days.

Courses:

As displayed by the flags on Race Committee boat: See the Buoy Race Courses and mark chart.

At the discretion of the race committee, if code flag T (Tango) is displayed, the race is from the start-finish line set by the race committee to the Itsami ledge government mark (leave to port) and back to the start-finish line.

Start Times:

Attention: Ready for start sequence: multiple short sounds	11:54
First Warning Signal: Class 1 flag up	11:55
Preparatory Signal: P flag up	11:56
P flag down	11:59
First Start Class 1, Warning Class 2: Class 1 flag down, Class 2 flag up	12:00
Preparatory Signal: P flag up	12:01
P flag down	12:04
Second Start Class 2: Class 2 flag down	12:05

Finish time limit:

6 hours after each class start, or one hour after the first finisher in each class, whichever is shorter.

Wednesday Evening Races:

These short, mid-week evening buoy races include the Commodore's Series, Vice Commodore's Series, and the Secretary's Series. Each series has 4 races scheduled. Each series will have one throw out if all scheduled races are sailed.

Commodore's Series is in June, the Vice Commodore's Series is in July, and the Secretary's Series is in August. See the SSSS calendar for the dates of each series.

Courses:

As displayed from the Committee Boat: See the Buoy Race Courses and mark chart.

Start Times:

Attention: Ready for start sequence: multiple short sounds	18:24
First Warning Signal: Class 1 flag up	18:25
Preparatory Signal: P flag up	18:26
P flag down	18:29
First Start Class 1, Warning Class 2: Class 1 flag down, Class 2 flag up	18:30
Preparatory Signal: P flag up	18:31
P flag down	18:34
Second Start Class 2: Class 2 flag down	18:35

Finish Time Limit:

2.0 hours after each class start or 30 minutes after the finisher in each class, whichever is shorter.

Buoy Race Courses

Start and finish between the RC boat and a temporary mark, or a SSSS race mark, set by the RC boat. All races are four laps unless shortened. The races may be shorted after a lap at the start-finish line, or at a mark.

If one flag is flown by the RC:

The windward mark is indicated by the Course Flag.

Start, then round the windward mark to port. Next round either end of the start/finish line, leaving signal boat to port, or pin end to starboard to complete each lap.

If two flags are flown by the RC:

The windward and leeward marks are indicated by the Course Flags. The windward mark corresponds to the first Course Flag; the leeward mark corresponds to the second Course Flag.

Start, round the windward mark, the leeward mark, then cross the start/finish line to complete each lap. All marks left to port.

The start/finish line is closed unless starting or finishing a lap. Boats sailing through the line when not starting or finishing a lap will be scored DNF without a protest hearing. This amends RRS Rule 63, Hearings.

Triangular course option:

The RC will fly a Code Flag F over the Color of the windward mark.

The gybe mark could be a SSSS mark or a drop mark and will be located at approximately 45 degrees from the windward mark.

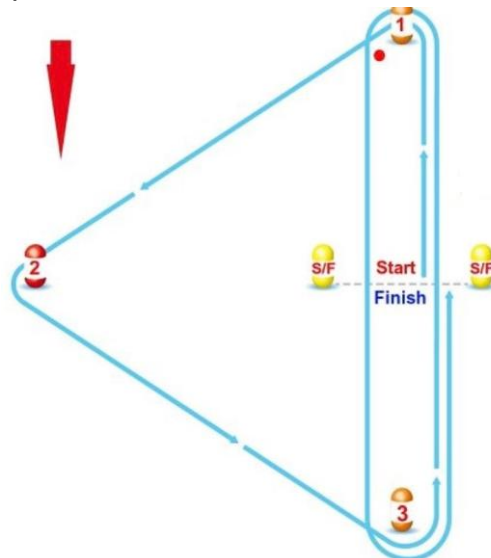
The leeward mark will be approximately 45 degrees from the gybe mark.

Start, round the windward mark, the wing mark, the leeward mark, then cross the start/finish line to complete each lap.

The start/finish line is closed unless starting or finishing a lap.

Any additional laps will be windward/leeward.

All marks are left to port.



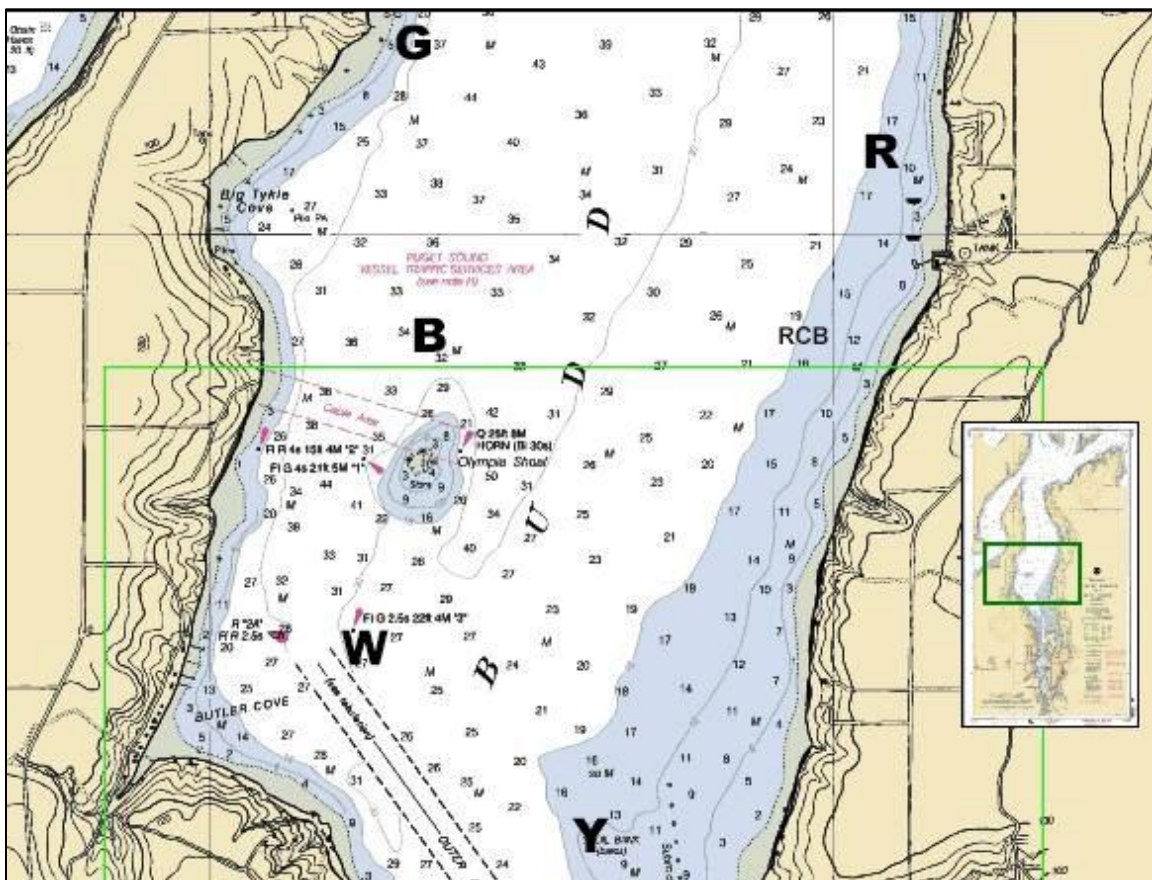
Changing the Course after the Start

The course may be changed after the start by displaying Code Flag C and making repetitive sound signals. The colored flags for the new course will be displayed by the Race Committee. (Amends RRS 33(a) and 33(b))




Read Course flags top to bottom if displayed vertically, or front to back if displayed horizontally.

Marks:

The marks are white SSSS cylindrical marks located as shown on the chart. Mark W is a U.S. Gov't Dolphin. Drop marks are inflatable orange or yellow marks set by the RC, and will be located to windward or leeward of the start-finish line.



MARK LOCATIONS

Flag		Position
Green		47:06.609N 122:55.305W
Black		47:05.639N 122:55.206W
Red		47:06.133N 122:53.925W
Yellow		47:04.677N 122:54.825W
White		47:05.144N 122:55.548W
Code Flag Delta		Drop mark set by the Race Committee
Code Flag Foxtrot		Drop mark set by the Race Committee or other SSSS Color mark.
Code Flag Tango		47:10.385N
Itsami Ledge		122:50.217W

The coordinates given are approximate and provide the general location of the mark. If the position of the mark varies from that given, it is not grounds for redress.